





Jefferson County Commission



Jefferson Health Systems
Cooper Green Mercy Hospital

CGMH TRANSITION PLAN UPDATE

Otis L. Story, Sr
December 10, 2012

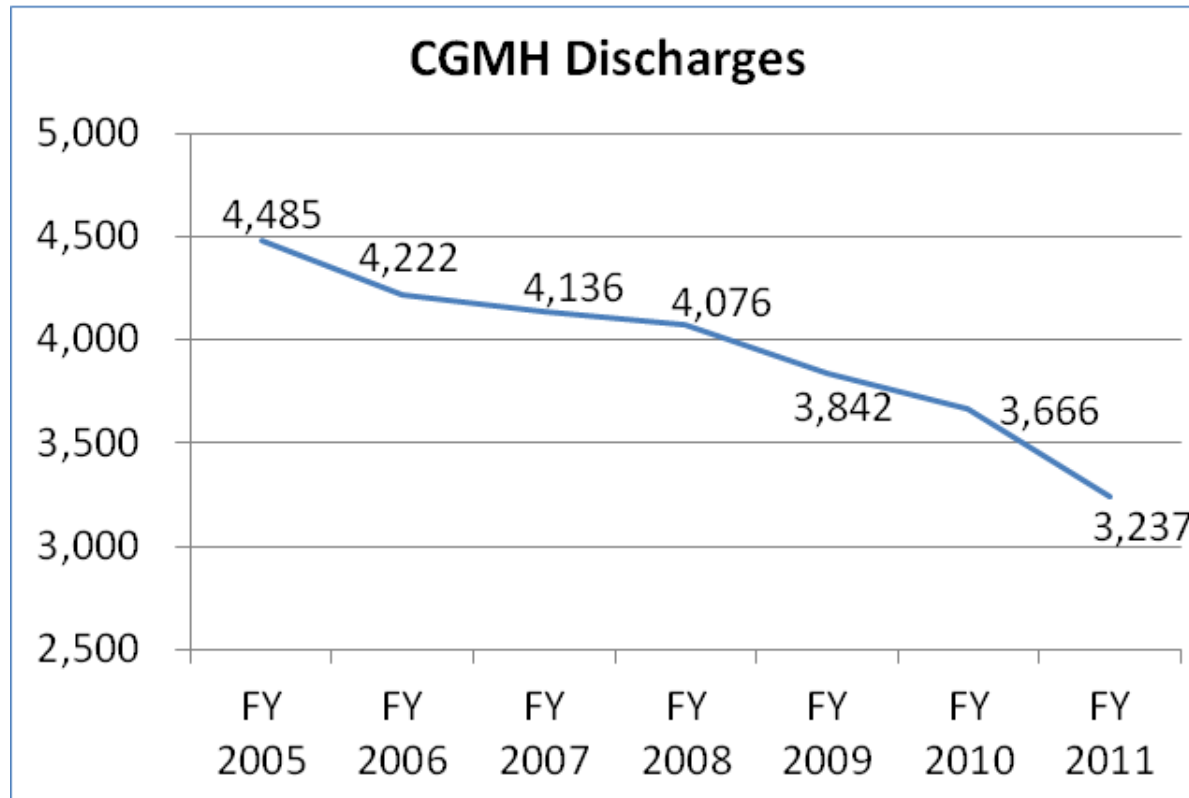
Background

- Healthcare is experiencing a historical transformation
- Driven by the ever increasing cost of care
- Affordable Care Act (ACA) is at the forefront
- Hospital centric → Outpatient care

Background

- Volume versus Value
- Distributive Community based model
- Prevention and chronic disease management
- Change in reimbursement's impact on the poor

CGMH CURRENT STATE



CGMH CURRENT STATE

CGMH – Inpatient Average Daily Census:

	2008	2009	2010	2011	2012
JAN	56	58	53	55	53
FEB	65	71	59	62	50
MAR	57	60	56	56	46
APR	56	59	55	49	43
MAY	46	52	54	52	30
JUN	50	55	61	58	31
JUL	54	58	57	53	35
AUG	55	49	59	52	35
SEP	53	49	60	48	33
OCT	55	34	61	47	27
NOV	57	42	56	50	26
DEC	58	45	53	43	
YEAR AVG	55.2	52.7	57.0	52.1	37.2

CGMH CURRENT STATE

NUMBER OF EMPLOYEES:

CGMH STAFFING -- FY12	
MONTH	FTE
JANUARY	603.85
FEBRUARY	601.35
MARCH	591.85
APRIL	531.25
MAY	519.58
JUNE	513.93
JULY	511.91
AUGUST	511.8
SEPTEMBER	490.16
OCTOBER	463.2
NOVEMBER	439.13
DECEMBER	-

CHANGE = OPPORTUNITY

- Opportunity to transform CGMH from acute care to primary and urgent care
- Opportunity to reallocate resources
- Opportunity to be more efficient and effective
- Opportunity to provide focused high quality care

TRANSITION

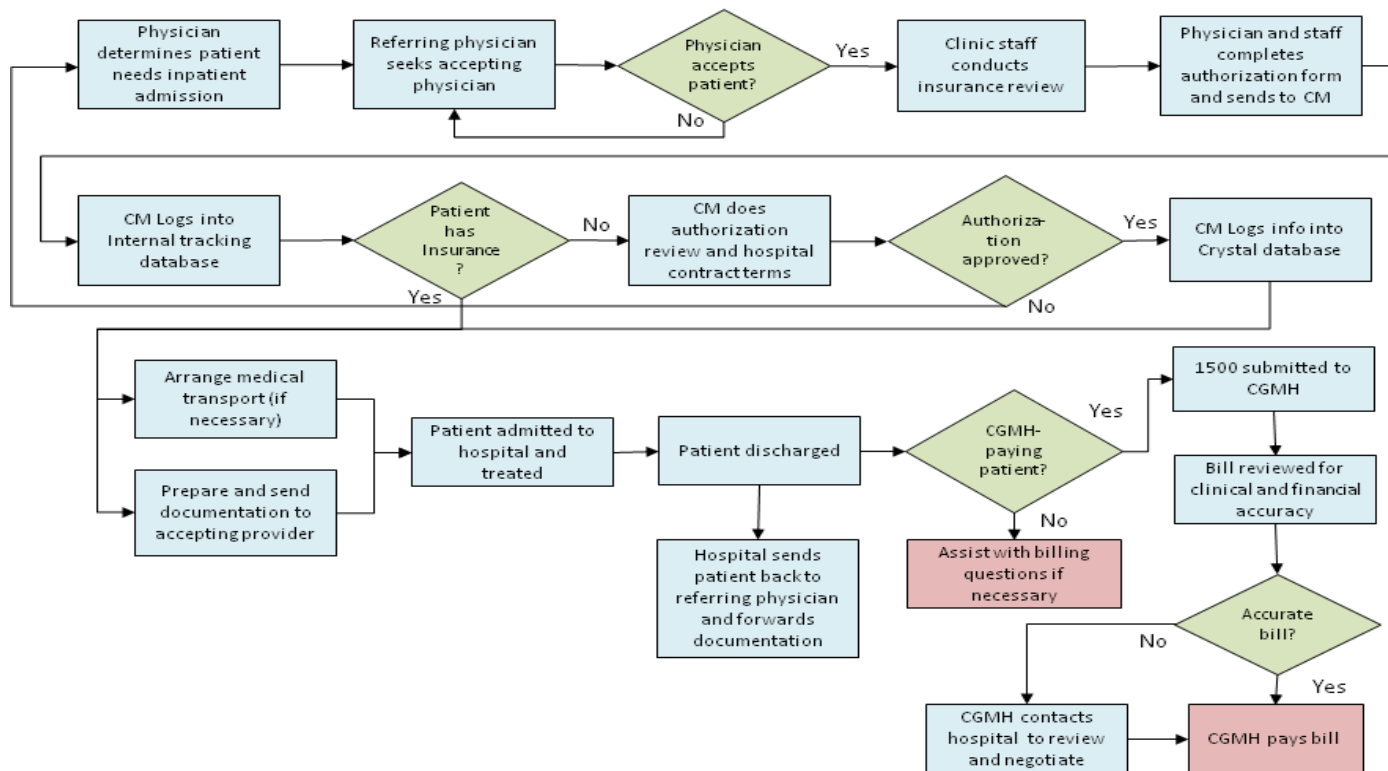


THE WORKOUT

- NOTIFICATION
- EMPLOYEE RELATIONS
- FINANCE
- CONTRACTS
- PATIENT CARE SERVICES

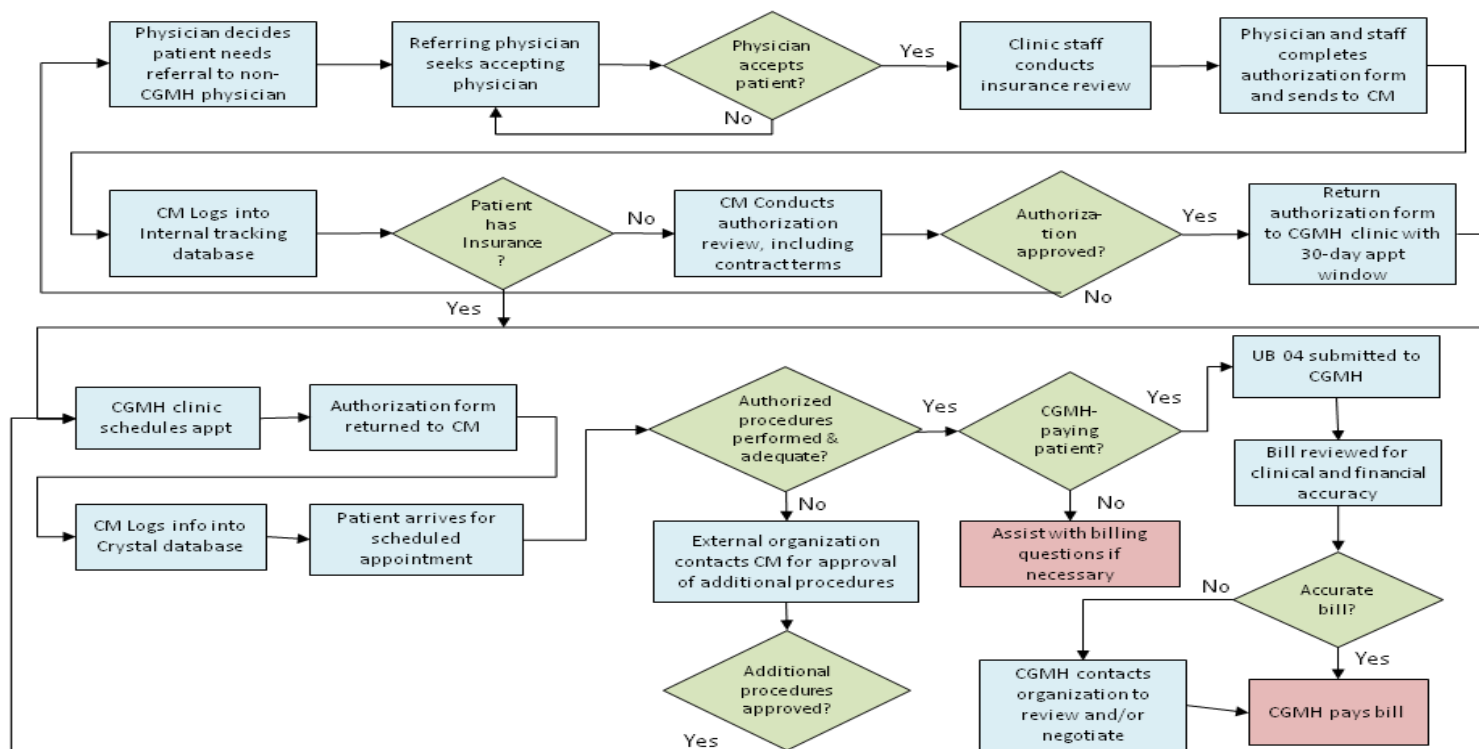
FLOW PROCESS ANALYSIS

Flow Process 1:
Outpatient Clinic to Inpatient Hospital



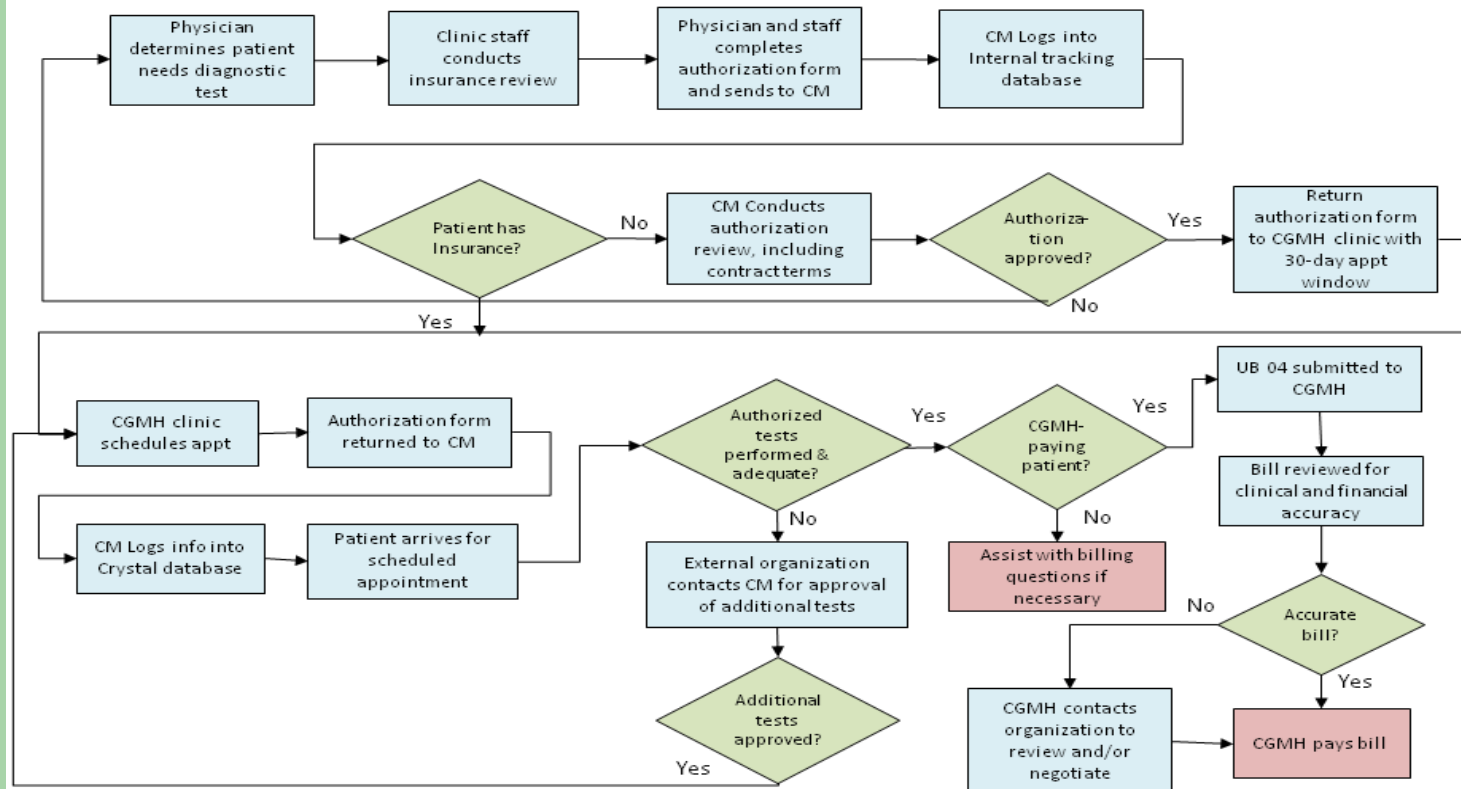
FLOW PROCESS ANALYSIS

Flow Process 2:
Outpatient Clinic to External Outpatient Service



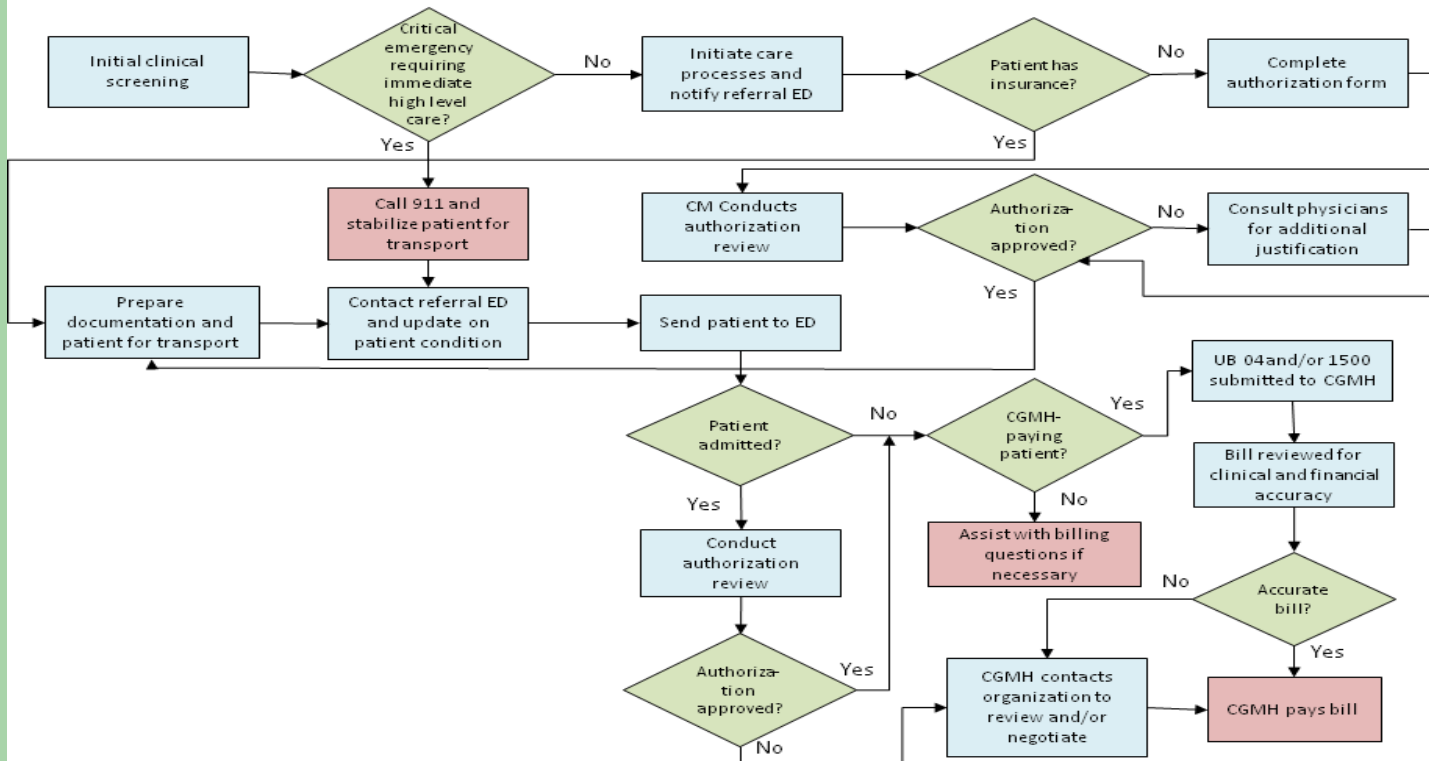
FLOW PROCESS ANALYSIS

Flow Process 3:
Outpatient Clinic to Diagnostic Testing



FLOW PROCESS ANALYSIS

Flow Process 4:
Urgent Care/Outpatient Clinic to Emergency Services



PHASE II

In Phase II we will build the structure to achieve a high performing organization. This phase will give us the opportunity to develop a stable and self sustaining community based population health network.



THANK YOU